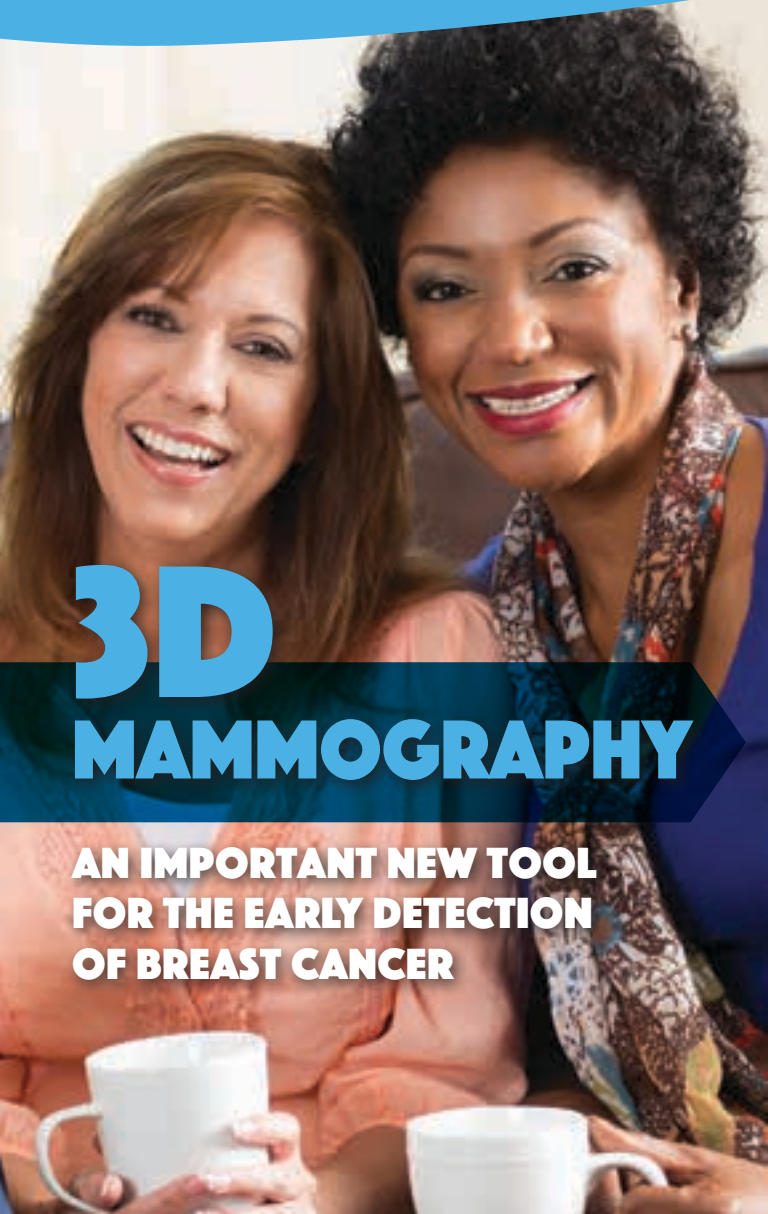


RIS

RADIOLOGY AND IMAGING SPECIALISTS

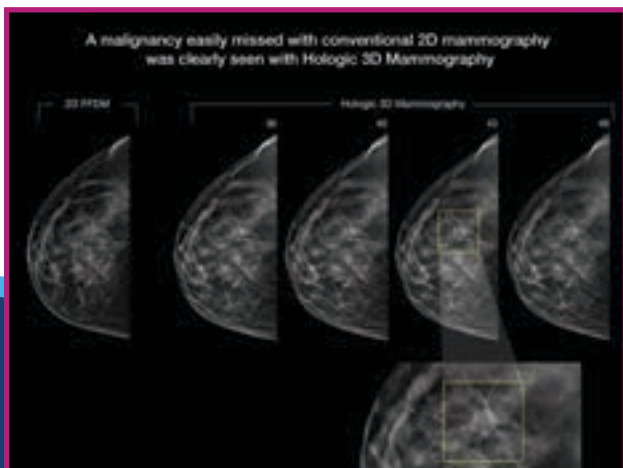


3D MAMMOGRAPHY

**AN IMPORTANT NEW TOOL
FOR THE EARLY DETECTION
OF BREAST CANCER**

IMPROVED DETECTION. FEWER FALSE POSITIVES.

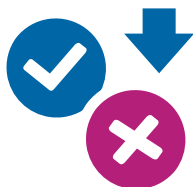
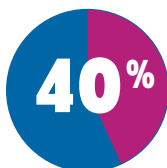
3D MAMMOGRAPHY, also known as breast tomosynthesis, is an exciting innovation in breast screening. It is similar to a mammogram in that it uses x-rays to produce images of breast tissue. However, unlike 2D mammography, tomosynthesis captures multiple image segments or 'slices' of the breast, at different angles, and then reconstructs them into a three-dimensional image that is capable of showing more detail. This technique increases the ability to find smaller cancers that may be hidden by the "overlapping" of breast tissue on a traditional mammogram.



3D mammography is capable of finding smaller cancers that may be hidden by the "overlapping" of breast tissue on a traditional mammogram.

3D MAMMOGRAPHY OFFERS:

Achieves an up to
**40% IMPROVED
DETECTION RATE**



with **15% FEWER RECALLS
AND FEWER FALSE
POSITIVES¹**

**LESS BREAST
COMPRESSION/
DISCOMFORT**



An excellent screening option for
all women, and especially beneficial
for women with dense breasts



¹ Skaane P, Bandos AI, Gullien R, et al. Comparison of digital mammography alone and digital mammography plus tomosynthesis in a population-based screening program. Radiology. 2013;267(1):47-56

² Source: BreastCancer.org



AN EXCELLENT CHOICE FOR WOMEN IN **ALL RISK** CATEGORIES

The average U.S. woman has a 1 in 8 risk over her lifetime of being diagnosed with breast cancer. What's more, nearly 70% of women diagnosed with breast cancer do not have a family history of the disease. 3D mammography improves the cancer detection rate by as much as 40%, with 15%-40% fewer false positives and significantly lower recall rates.¹

Annual screening mammography is recommended to begin at age 40 for average risk women. Research shows the most lives are saved by screening at these intervals.



The average U.S. woman has a **1 IN 8 RISK** over her lifetime **OF BEING DIAGNOSED WITH BREAST CANCER.**



IMPROVED DETECTION FOR WOMEN WITH DENSE BREASTS

Approximately 40% of women have dense breasts. Dense breast tissue—which is more common in younger women—can mask cancers and make them harder to be detected by traditional mammography. It is now believed that dense breast tissue increases a woman’s risk for developing breast cancer. In fact, some studies have concluded that a woman with dense breasts has up to a 6 times greater chance of developing breast cancer, as well as more aggressive forms of breast cancer.²



RIS BREAST IMAGING EXPERTISE

Radiology & Imaging Specialists is among Central Florida's leading providers of diagnostic imaging and interventional radiology services. We are among the region's most experienced radiology team at performing 3D mammography, along with breast MRI, breast ultrasound and automated whole breast ultrasound (an excellent supplemental screening option for women with dense breasts).

Our mission is to provide our patients and the physicians who care for them with the most accurate, reliable, professional and courteous services utilizing the latest and most advanced radiology and imaging technology.

For more information, or to schedule your appointment, please call: 863-688-2334



PLANT CITY IMAGING

(813) 750-1724

206 W. Alexander St STE. 1 • Plant City, FL 33563